

650 Town Center Drive, 20th Floor
Costa Mesa, California 92626-1925
Tel: (714) 540-1235 Fax: (714) 755-8290
www.lw.com

LATHAM & WATKINS LLP

FIRM / AFFILIATE OFFICES

| | |
|-------------|-------------------|
| Barcelona | New Jersey |
| Brussels | New York |
| Chicago | Northern Virginia |
| Frankfurt | Orange County |
| Hamburg | Paris |
| Hong Kong | San Diego |
| London | San Francisco |
| Los Angeles | Shanghai |
| Madrid | Silicon Valley |
| Milan | Singapore |
| Moscow | Tokyo |
| Munich | Washington, D.C. |

April 30, 2007

File No. 037484-0006

VIA FEDEX

CALIFORNIA ENERGY COMMISSION
Attn: Docket No. 06-AFC-4
1516 Ninth Street, MS-4
Sacramento, California 95814-5512

| | |
|-----------------|-------------|
| DOCKET | |
| 06-AFC-4 | |
| DATE | APR 30 2007 |
| RECD. | APR 30 2007 |

Re: Vernon Power Plant Project: Docket No. 06-AFC-4

Dear Sir/Madam:

Pursuant to California Code of Regulations, title 20, sections 1209, 1209.5, and 1210, enclosed herewith for filing please find a copy of a letter from Art Aguilar to Dr. James Reede, dated April 26, 2007.

Please note that the enclosed submittal was filed today via electronic mail to your attention and to all parties on the CEC's current electronic proof of service list.

Very truly yours,



Paul E. Kihm
Senior Paralegal

Enclosure

cc: CEC 06-AFC-4 Proof of Service List (w/ encl. via e-mail)
Michael J. Carroll, Esq. (w/ encl.)



Central Basin
Municipal Water District

April 26, 2007

Dr. James Reede, Ed.D
California Energy Commission
1516 Ninth Street
Sacramento, CA 95814-5512

17140 S. Avalon Blvd.
Suite 300
Carson, CA 90748

Phone: 310.217.2222
Fax: 310.516.1327
www.centralbasin.org

Dear Dr. Reede:

On behalf of the Central Basin Municipal Water District Board of Directors, I would like to take this opportunity to express our support for the Vernon Power Plant—an important regional project that will use recycled water to bring much-needed power to Southern California.

Board of Directors

Division I
Edward C. Vasquez

Division II
Robert Apodaca

Division III
Anuro Chacon

Division IV
Rudy C. Montaño

Division V
Phillip D. Hawkins

General Manager
Art Aguilar

The Vernon Power Plant is a critical component of our Southeast Water Reliability Project, which is Central Basin's largest recycled water project in recent years. Comprised of 11-plus miles of pipeline, it will bring recycled water to the area's large industrial and irrigation facilities. The Vernon Power Plant will be our largest recycled water customer, a partnership that will allow us to increase our pipeline capacity to serve additional customers throughout the region and conserve more than 8.5 billion gallons of drinking water annually. Reaching the pipeline's full capacity is contingent on the construction of the Vernon Power Plant.

As the General Manager of the Central Basin, I can tell you about the value of a recycled water project of this size. Using recycled water saves millions of gallons of precious drinking water for the region and helps the environment by drastically reducing the amount of wastewater discharged into the ocean. Additionally, the availability of recycled water will improve local economic development, enabling cities to offer lower water rates as incentives to attract new businesses.

We view construction of the Vernon Power Plant as proposed as a win-win. It will achieve long-term energy and water reliability for the region, broaden key partnerships for future conservation projects and expand the benefits and use of recycled water for generations to come. If you would like additional information about the Southeast Water Reliability Project or our support for the Vernon Power Plant, please contact me at (310) 436-2605.

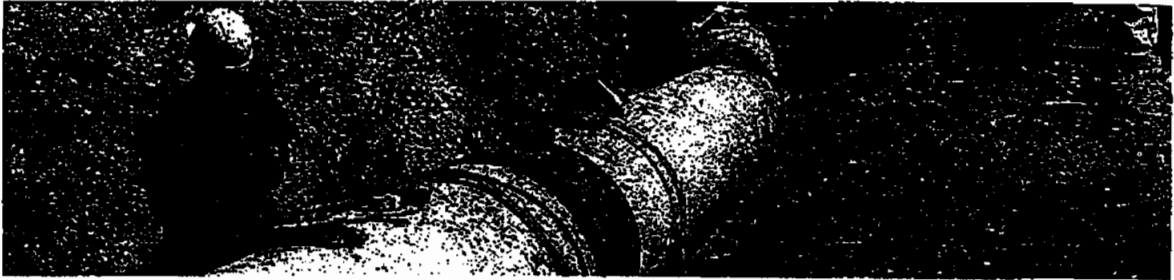
Thank you,



Art Aguilar
General Manager

Encl.: Southeast Water Reliability Project Fact Sheet
cc: Dr. Barry Wallerstein, Executive Officer, SCAQMD
Jeff Harrison, City Attorney, City of Vernon

Southeast Water Reliability Project



The Big Picture

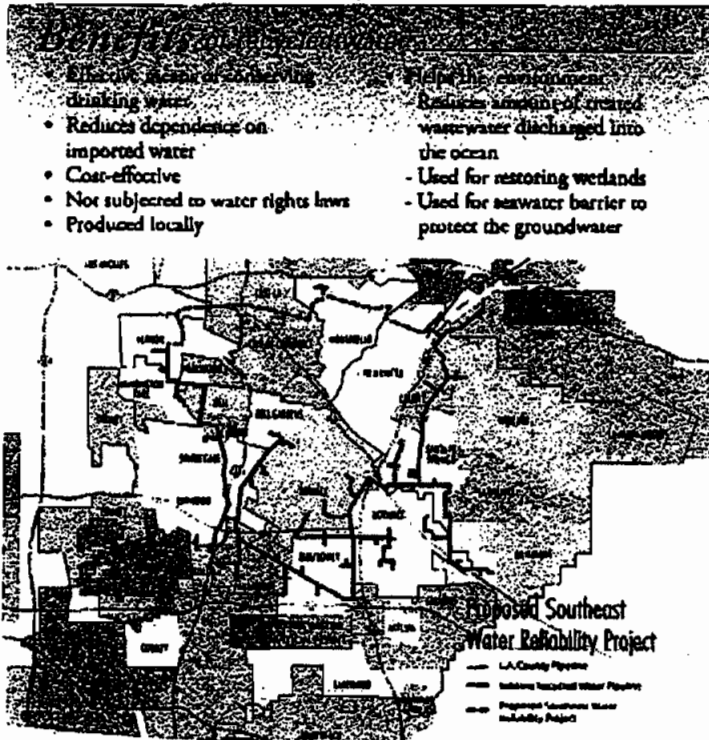
In an effort to conserve the area's groundwater and reduce reliance on imported water, Central Basin Municipal Water District is moving forward with the Southeast Water Reliability Project (SWRP). Since Southern California is a semi-desert region, water conservation is vital to ensuring a safe and reliable water supply. Using recycled water for commercial, industrial and landscape-irrigation uses instead of drinking water is an important component in Central Basin's conservation plan.

About the Project

With industrial sites as the largest single users of potable water, SWRP would deliver recycled water to many large industrial and irrigation facilities, providing regional water-saving benefits. The 11-plus mile pipeline will extend from Pico Rivera through Montebello and southeast Los Angeles County, connecting to the existing system in Vernon. Additionally, the project will enhance the operation reliability of the current system by completing an actual "loop" of existing pipelines. Once completed, SWRP will conserve more than 6.5 billion gallons of water annually.

Benefit to the Public

This type of project is vital to sustaining a reliable supply of water for Southern California, which imports most of its water from Northern California and the Colorado River. With these sources of water becoming increasingly limited, agencies such as Central Basin are working to develop a plan to reduce dependency on imported water sources. Recycled water offers a viable solution. As recycled water becomes available throughout Los Angeles County, it can be used for commercial, industrial and landscape-irrigation purposes, conserving the region's potable water supply.



- Efficient means of conserving drinking water:**
- Reduces dependence on imported water
 - Cost-effective
 - Not subjected to water rights laws
 - Produced locally

- Helps the environment:**
- Reduces amount of treated wastewater discharged into the ocean
 - Used for restoring wetlands
 - Used for seawater barrier to protect the groundwater

Central Basin's ability to produce recycled water locally also means less impact on fragile ecosystems, less energy to pump imported water long distances and a reliable water supply for the region. As an added benefit, Central Basin's recycled water can be purchased for less than potable water and is virtually drought-proof, providing an economic incentive for businesses in the area to use recycled water. The lower cost of water will also attract more businesses to the area, providing an opportunity for regional economic growth. SWRP was designed through Central Basin's proactive approach to water conservation and environmentally-sound practices and will be a great benefit to southeast Los Angeles County. It is expected to be completed in 2009.

**STATE OF CALIFORNIA
ENERGY RESOURCES
CONSERVATION AND DEVELOPMENT COMMISSION**

| | | |
|------------------------------------|---|------------------------------------|
| In the Matter of: |) | Docket No. 06-AFC-4 |
| |) | |
| Application for Certification, |) | ELECTRONIC PROOF OF SERVICE |
| for the VERNON POWER PLANT PROJECT |) | LIST |
| by the City of Vernon |) | |
| |) | (Revised April 30, 2007] |
| _____ |) | |

Transmission via electronic mail and by depositing one original signed document with FedEx overnight mail delivery service at Costa Mesa, California with delivery fees thereon fully prepaid and addressed to the following:

DOCKET UNIT

CALIFORNIA ENERGY COMMISSION
Attn: DOCKET NO. 06-AFC-4
1516 Ninth Street, MS-4
Sacramento, California 95814-5512
docket@energy.state.ca.us

Transmission via electronic mail addressed to the following:

APPLICANT

Donal O'Callaghan
Director of Light and Power
City of Vernon
4305 So. Santa Fe Avenue
Vernon, California 90058
docallaghan@ci.vernon.ca.us
rtoering@ci.vernon.ca.us
e.fresch@sbcglobal.net

John Carrier
Environmental Consultant
CH2M Hill
2485 Natomas Park Dr. #600
Sacramento, California 95833-2937
john.carrier@ch2m.com

VERNON POWER PLANT PROJECT
CEC Docket No. 06-AFC-4

COUNSEL FOR APPLICANT

Jeff A. Harrison, City Attorney
City of Vernon
4305 So. Santa Fe Avenue
Vernon, California 90058
jharrison@ci.vernon.ca.us

John Karns, Counsel for Vernon
Karns & Karabian
900 Wilshire Boulevard, Suite 530
Los Angeles, California 90017
jkarns@karnskarabian.com

INTERESTED AGENCIES

Albert Fontanez
Assistant Planner
City of Huntington Park
6550 Miles Avenue
Huntington Park, California 90255
afontanez@huntingtonpark.org

Felipe Aguirre
Edward Ahrens
City of Maywood
4319 E. Slauson Ave
Maywood California 90270
faguirre@cityofmaywood.com
eahrens@cityofmaywood.com

Eric Saltmarsh
Electricity Oversight Board
770 L Street, Suite 1250
Sacramento, California 95814
esaltmarsh@eob.ca.gov

Yolanda Garza
Unit Chief
Permitting and Corrective Action Branch
Department of Toxic Substances Control
1011 N. Grandview Street
Glendale, California 91201
ygarza@dtsc.ca.gov

VERNON POWER PLANT PROJECT
CEC Docket No. 06-AFC-4

Christine Bucklin, P.G.
Senior Engineering Geologist
Department of Toxic Substances Control
1011 N. Grandview Street
Glendale, California 91201
cbucklin@dtsc.ca.gov

John Yee
Chandrashekhhar Bhatt
South Coast Air Quality Mgmt. District
21865 E. Copley Drive
Diamond Bar, California 91765-4182
jyee@aqmd.gov
cbhatt@aqmd.gov

Jennifer Pinkerton
City of Los Angeles
Environmental Affairs Department
200 N. Spring Street
Room 2005, MS 177
Los Angeles, California 90012
Jennifer.Pinkerton@lacity.org

INTERVENORS

Marc D. Joseph
Gloria D. Smith
California Unions for Reliable Energy
Adams Broadwell Joseph & Cardozo
601 Gateway Blvd., Suite 1000
South San Francisco, California 94080
gsmith@adamsbroadwell.com
mdjoseph@adamsbroadwell.com

Bharam Fazeli
Communities for a Better Environment
5610 Pacific Boulevard, Suite 203
Huntington Park California 90255
bfazeli@cbeocal.org

Shana Lazerow
Philip Huang
Communities for a Better Environment
1440 Broadway, Suite 701
Oakland, California 94612
slazerow@cbeocal.org
phuang@cbeocal.org

VERNON POWER PLANT PROJECT
CEC Docket No. 06-AFC-4

ENERGY COMMISSION

Jackalyne Pfannenstiel, Chair
Presiding Committee Member
jpfannen@energy.state.ca.us
cgraber@energy.state.ca.us

James D. Boyd, Commissioner
Associate Committee Member
jboyd@energy.state.ca.us

Susan Gifter
Hearing Officer
sgifter@energy.state.ca.us

James W. Reede, Jr., Ed.D
Siting Project Manager
jreede@energy.state.ca.us

Kenneth Celli
Staff Attorney
kcelli@energy.state.ca.us

Public Adviser
pao@energy.state.ca.us


DECLARATION OF SERVICE

I, Paul Kihm, declare that on April 30, 2007, I deposited the required original signed copy of the attached:

LETTER FROM ART AGUILAR TO DR. JAMES REEDE, DATED APRIL 26, 2007

with FedEx overnight mail delivery service at Costa Mesa, California with delivery fees thereon fully prepaid and addressed to the California Energy Commission. I further declare that transmission via electronic mail was consistent with the requirements of California Code of Regulations, title 20, sections 1209, 1209.5, and 1210. All electronic copies were sent to all those identified on the Proof of Service List above.

I declare under penalty of perjury that the foregoing is true and correct. Executed on April 30, 2007, at Costa Mesa, California.



Paul Kihm